

The Pulsa 700E cable management fastening system for mechanical and electrical contractors – a secure and fast solution for fixing to concrete and steel.



CT Clip



**Kit Contains:**

Spit Pulsa 700E Cordless Gas Nailer, high impact carry case, 2 x batteries, battery charger, safety glasses to EN166:F, allen key, dust cover and instruction manual.

**Eurocode & Description**

• Eurocode: 010327 Pulsa 700E	Box Qty 1
----------------------------------	--------------

**Technical Specification**

<b>Weight:</b>	3.6kg
<b>Dimensions:</b>	383 x 295 x 100mm
<b>Magazine Capacity:</b>	20 pins
<b>Impact Force:</b>	82 J
<b>Actuation Pressure:</b>	5kg
<b>Voltage:</b>	6V
<b>Overdrive:</b>	4mm
<b>Amperage:</b>	600mA
<b>Intermittent operation:</b>	2 pins per second
<b>Fuel Cell Life:</b>	850 shots
<b>Battery Charge Life:</b>	1,500 pins
<b>Charge Time:</b>	1 hour

The Spit Pulsa 700E offers excellent dust protection, ventilation, cooling: three essential ingredients for better tool efficiency and lifetime. The tool has a dust protected magazine, which together with the air filter offers integrated protection from dust and debris. Plus, ventilation grilles help cool the tool, ideal for periods of intensive use. All these features will result in less tool maintenance, keeping you working longer.

**Product Advantages**

- Full range of Cable Management Accessories (see pages 82 - 83)
- HC6 Hard Concrete & Steel Pins for improved success of fixing
- Excellent performance, power, visibility and balance
- **PulsaLift Pole Tool** for working overhead
- Extra body armour to improve tool durability
- Air inlet and outlet filters to keep you working for longer
- Easy access to depth of drive adjuster

**Substrates**

- Concrete
- Composite steel decking
- Steel
- Solid brick
- Pre-cast hollow pot
- Pre-stressed concrete
- Reinforced concrete
- Reinforced prefabricated concrete

**Features:**



**PulsaLift**

An essential accessory for any Spit Pulsa user installing overhead. Please see page 81 for further details.



Please refer to page 80 for the full Pulsa 700E Pin range.

**Pin Selection Guide:**

	C6 SELECTION HC6									
	CLIP ELEC	CONDUIT CLIP	CT-CLIP	E-CAV	P-CLIP	CABLE BOW	STEEL BAND	METAL CLIPS	TRH CLIP**	FIREFIX™
<b>STEEL</b>	HC6 15-17	HC6 15-17		HC6 15-17		HC6 17-22				HC6 15
<b>HARD CONCRETE</b>	HC6 17-22	HC6 22		HC6 17-22		HC6 17-22				HC6 15-17
<b>CONCRETE &amp; BRICK</b>	HC6 22-27	HC6 27		HC6 22-27		HC6 27-32				HC6 17-22
	C6 25-30	C6 30		C6 25-30		C6 30-35				C6* 20-25

\* Site test recommended. Call the Technical Helpline on 0800 7314924.  
\*\* Threaded Rod maximum length 600mm and static loads only.



**Applications**

**Cable Management**

- Skirting and dado trunking systems
- Mini trunking systems
- Metal trunking systems
- Low voltage cabling and temporary lighting
- Metal and plastic capping
- Fire resistant cabling systems (Prysmian Firefix™)

**Wiring Accessories**

- Metal back boxes
- PVC - U back boxes
- PVC - U conduit
- Steel conduit
- Junction boxes
- Switch boxes
- Smoke detectors

**TIP**

For overhead electrical fixing applications why not try the Spit PulsaLift pole tool. Refer to page 81.

**C6 Pins - Standard Concrete Substrates**

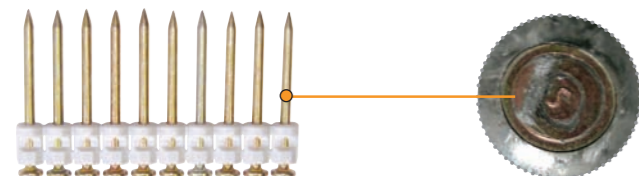


C6 all-purpose collated pins for fixing into concrete. Designed for use in standard applications. Collation remains intact when fixed. Available in sizes from 20 - 40mm.

Eurocode	Description	Length	Collation	Box Qty
046310	C6 20	20mm	Black	500
046320	C6 25	25mm	Black	500
046330	C6 30	30mm	Black	500
046340	C6 35	35mm	Black	500
046350	C6 40FH	40mm	White	500

10 strip collation (suitable for use in 20 and 40 pin magazine) + 1 x Fuel Cell.

**C6 Pins, Flush Head - Standard Concrete Substrates**



Standard concrete pins, with collation that fragments on impact to leave the pin 'flush' to the fixed article. Leaves no plastic residue after fixing. Available in sizes from 20 - 40mm.

Eurocode	Description	Length	Collation	Box Qty
011225	C6 20 FH	20mm	White	500
011853	C6 25 FH	25mm	White	500
011860	C6 30 FH	30mm	White	500
046350	C6 40 FH	40mm	White	500

10 strip collation (suitable for use in 20 and 40 pin magazine) + 1 x Fuel Cell.

**CG6 Pins Soft Washered - Standard Concrete Substrates**

(Single shot - unsuitable for magazine)



Standard Concrete pins for fixing brittle articles e.g. electrical back boxes. The collation cushions the head of the pin to reduce impact. Available in 15 - 35mm.

Eurocode	Description	Length	Collation	Box Qty
011210	HCG6 15	15mm	White	500
046610	CG6 20	20mm	White	500
046620	CG6 25	25mm	White	500
011211	CG6 30	30mm	White	500
011212	CG6 35	35mm	White	500

10 strip collation + 1 x Fuel Cell (Single shot only - cannot be used in magazine).

**HC6 Pins - Hard Concrete & Steel Substrates**



HC6 collated pins for fixing into concrete and steel. Designed to increase success rate in substrates with higher aggregate content. Collation remains intact when fixed. Available in sizes from 15 - 32mm.

Eurocode	Description	Length	Collation	Box Qty
053206	HC6 15	15mm	Orange	500
011876	HC6 17	17mm	Orange	500
011891	HC6 22	22mm	Orange	500
011877	HC6 27	27mm	Orange	500
053207	HC6 32	32mm	Orange	500

10 strip collation (suitable for use in 20 and 40 pin magazine) + 1 x Fuel Cell

**HC6 Pins, Flush Head - Hard Concrete and Steel Substrates**



Hard concrete and steel pins, with collation that fragments on impact to leave the pin 'flush' to the fixed article. Use with Prysmian Firefix™. Available in sizes from 15 - 27mm.

Eurocode	Description	Length	Collation	Box Qty
011885	HC6 15 FH	15mm	White	500
053893	HC6 17 FH	17mm	White	500
053204	HC6 22 FH	22mm	White	500
053205	HC6 27 FH	27mm	White	500

10 strip collation (suitable for use in 20 and 40 pin magazine) + 1 x Fuel Cell.

**PulsaLift Pole Tool**



Essential accessory for a Spit Pulsa 700E user installing overhead.



For Mechanical and Electrical contractors the challenge of fixing overhead is one faced everyday. Now, with the Spit PulsaLift Pole Tool, the need for hop ups and platforms is eliminated, making the Spit PulsaLift an essential accessory for any Spit Pulsa user installing overhead.

The Spit Pulsa 700E tool can be quickly and effortlessly fitted to the pole and its hollow plastic frame keeps weight to a minimum, enabling users to work faster and for longer.

**Eurocode & Description**

- Eurocode: 011160  
PulsaLift Pole Tool Qty:1

**Product Advantages**

- Light weight < 3kg
- Composite moulded material
- Can reach ceiling heights from 2.5 up to 3.8 metres
- Very well balanced; easy to use
- Easy to place hand in the middle of the Pole for low ceiling heights
- Pole with Pulsa can be laid on floor without damaging the tool
- Can be used to fix to Pulsa 700E accessories



FOR USE WITH PULSA 700E ONLY



Simple tool locking device. Just turn and click into place.



Pole with Pulsa can be laid on the floor without damaging the tool



Simple actuation device with cable tensioner

**Pulsa Electrical Starter Kit**



FOR USE WITH PULSA 700E ONLY



To get started all you need is the brand NEW Electrician's kit with most popular Spit pins and electrical fixings/clips.

The kit is geared to meet initial needs on site and to test different ways of fixing various electrical applications.

**Eurocode & Description**

- Eurocode: 922348  
Electrical Starter Kit Box Qty 1

**Kit Contains:**

	Qty
• HC6 17mm pins	100
• HC6 22mm pins	150
• CG6 25mm pins	100
• Cable Bows	5
• Clip Elec	20
• CT Clips	20
• P Clips	10
• E Clips	20
• Fuel Cell	1

**Product Advantages**

- Ideal starter kit to complement the Pulsa 700E
- Range of hard concrete & steel, concrete and washered pins included
- Durable high quality plastic case

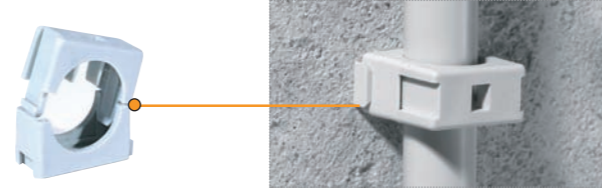
**E Clip Conduit Clip**



**For fast installation of pipework and conduit** - The clip is designed to clip easily onto the Pulsa 700E pin guide from the side, allowing a one handed operation. Available in both black and grey.

Eurocode	Description	Pipe / Conduit Ø	Box Qty
565031	Grey Conduit Clip	16mm	125
565032	Grey Conduit Clip	20mm	100
565033	Grey Conduit Clip	25mm	100
565034	Grey Conduit Clip	32mm	50
565035	Grey Conduit Clip	40mm	50
565036	Grey Conduit Clip	50mm	50
565532	Black Conduit Clip	20mm	100
565533	Black Conduit Clip	25mm	100

**ECAV Assembled E Clip**



**For a fast enclosed installation of either pipework or conduit** - The clip is designed to clip easily onto the Pulsa 700E pin guide allowing a one handed operation. After the base unit has been installed, the pipe and the lid unit simply push fit for a fast enclosed installation.

Eurocode	Description	Pipe / Conduit Ø	Box Qty
565502	ECAV Assembled E Clip	12 - 16mm	100
565503	ECAV Assembled E Clip	14 - 23mm	100
565504	ECAV Assembled E Clip	20 - 25mm	100

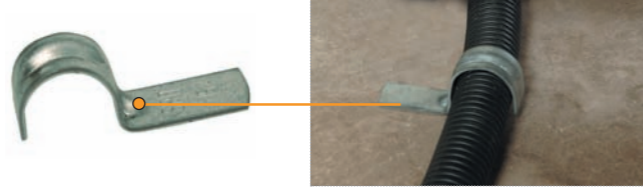
**P Clips**



**Designed to fasten conduit and pipework, primarily to the floors and walls** - Made from impact resistant polypropylene, it offers a lower cost option to metal clips, will not corrode, and will allow pipes to expand and contract. Single and double P Clips are available.

Eurocode	Description	Pipe / Conduit Ø	Box Qty
565080	Grey Single P Clip	16mm	150
565081	Grey Single P Clip	18mm	125
565082	Grey Single P Clip	20mm	100
565083	Grey Single P Clip	22mm	100
565084	Grey Single P Clip	25mm	75
565085	Grey Double P Clip	16mm	75
565086	Grey Double P Clip	20mm	50
565087	Grey Double P Clip	22mm	50

**NEW IMPROVED Steel P Clip**



**Designed to fix pipework and conduit** - Clips available in diameter 6mm to 32mm.

Eurocode	Description	Pipe / Conduit Ø	Box Qty
016983*	Steel Single P Clip	6mm	300
016984	Steel Single P Clip	8mm	300
016985	Steel Single P Clip	10mm	300
016988	Steel Single P Clip	16mm	150
016990	Steel Single P Clip	20mm	150
016991*	Steel Single P Clip	22mm	100
016993	Steel Single P Clip	25mm	100
016994	Steel Single P Clip	28mm	100
016995*	Steel Single P Clip	32mm	100

\* Order to order, minimum quantities apply.

**Universal Conduit and Pipe Clip**



**The self locking clip allows a range of different pipe and conduit sizes to be fastened** - It is made from a high impact polyamide that is both halogen free and UV resistant.

Eurocode	Description	Pipe / Conduit Ø	Box Qty
921445	Black Universal Clip	15 - 16mm	100
921446	Black Universal Clip	18 - 20mm	100
921447	Black Universal Clip	22 - 25mm	100

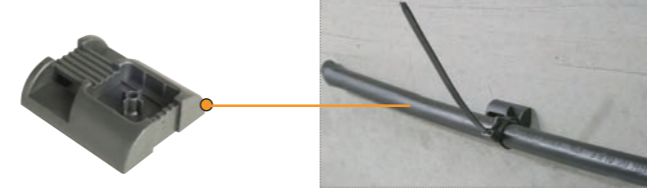
**Futurfix Pipe Clamp with EPDM insert**



**Futurfix Pipe Clamp is designed to fasten hot and cold pipes and conduit** - The EPDM (DIN4109) rubber insert both insulates and reduces rattle. Installed using the CG6 soft washered pin, two adjacent clips can be fastened with one fixing and pipes can be easily repaired in situ.

Eurocode	Description	Pipe / Conduit Ø	Box Qty
921442	Futurfix Pipe Clamp	15mm	50
921443	Futurfix Pipe Clamp	22mm	50
921444	Futurfix Pipe Clamp	28mm	50

**Clip Elec All-Purpose Cable Tie Clip**

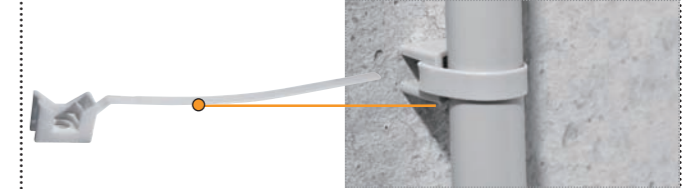


**Used for cable, conduit and pipework** - For use with cable ties (not included).

Eurocode	Description	Cable Tie Capacity	Box Qty
011203	Clip Elec All-purpose Cable Base*	9mm	100

\* Cable tie not included.

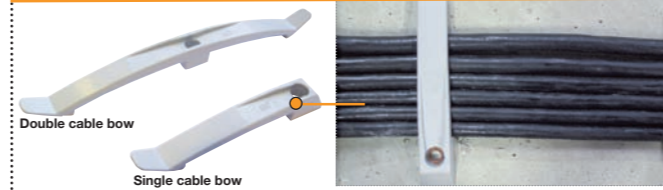
**CT Clip**



**The CT Clip is moulded with a cable tie** - Holds pipes, cable and conduit up to 32mm in diameter. Can be used in temperatures down to -5°. Available in grey or brown.

Eurocode	Description	Pipe / Conduit Ø	Box Qty
565508	Grey Cable Tie Clip	16 - 32mm	100
565512	Brown Cable Tie Clip	16 - 32mm	100

**Cable Bow Fixing**



**Designed for use with cables, replacing the need for cable and basket trays** - Both single and double cable bows are available.

Eurocode	Description	Pipe / Conduit Ø	Box Qty
565915	Single 8 Cable Bow	(3 x 1.5mm <sup>2</sup> )	50
565917	Single 8 Flame Retardant	(3 x 1.5mm <sup>2</sup> )	50
565916	Double 16 Cable Bow	(3 x 1.5mm <sup>2</sup> )	25
565918	Double 16 Flame Retardant	(3 x 1.5mm <sup>2</sup> )	25

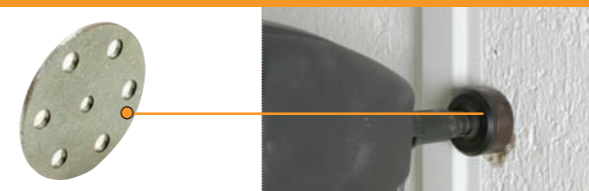
**All-Purpose Steel Band**



**Versatile All-Purpose Steel Band can be cut to any length.**

Eurocode	Description	Width x Length	Box Qty
064320	All-purpose Steel Band	12mm x 10 metres	1
064340	All-purpose Steel Band	17mm x 10 metres	1

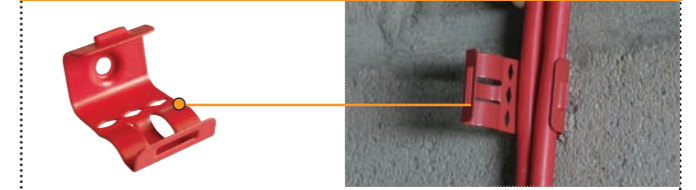
**Steel Washer - use with Magnetic Pin Guide**



**25mm Steel Washer, to be used with magnetic pin guide, Eurocode: 333700.**

Eurocode	Description	Ø	Box Qty
011204	Steel Washer	25mm	1,000

**Prysmian Firefix™**



**Unique cable fixing from Prysmian, used to fix fire performance cables** - Ten times quicker than conventional methods. Both single and double clips are available. The double clip requires an adaptor, which is included in box of clips.

Eurocode	Description	Box Qty
921622	Firefix™ Single Clip	500
921623	Firefix™ Double Clip 02 Size (Wire guide - 2 core x 1.5mm <sup>2</sup> or 3 core x 1.0mm <sup>2</sup> )	200
921624	Firefix™ Double Clip 04 Size (Wire guide - 4 core x 1.0mm <sup>2</sup> or 3 core x 1.5mm <sup>2</sup> )	200

N.B Other sizes available direct from Prysmian 0845 7678345

**Threaded Rod Hanger Clip (TRH)**



**Holds threaded rod up to 600mm long, chain or suspension cables can be hung from the clip** - Unique design enables the quality of the fixing to be tested as it is bent into place.

Eurocode	Description	Thread Ø	Box Qty
011430	Threaded Rod Hanger	M6 - M8	100

**Maximum Load 10kg.**

**Static loads only.**

**Please note: Do not use Pulsa with rod exceeding 600mm or rod diameter greater than Ø 8mm.**